



# Creative Voice

PUBLISHED BY THE ISLE OF WIGHT ARTS LEAGUE

May 2026



**The Arts Center @ 319** is the home of the **Isle of Wight Arts League**, co-located with the Visitor Center, at 319 Main Street in Smithfield.



In addition to the Arts Center, the Arts League also includes three music programs: Smithfield Music, the Summer Concert Series and Sundays at Four.

## 2026 Board of Directors

President - Diane Milner

Vice President - Steve Stewart

Secretary - Megan Windle

Treasurer - Charles Elmore

Board Members:

Charles Bryan, Brenda Lovell, Athena Rhodes, Nicole Talton, Sue Vaughn

Mary Cole - Sundays at Four Program Director

Elaine Dairo - Summer Concerts Program Director

Sheila Gwaltney - Arts Center Program Director

Mark Summitt - Smithfield Music Program Director



## Sundays at Four

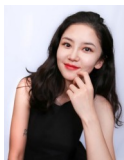
Concerts held at Christ Episcopal Church, 111 S. Church St., Smithfield. [marycole@tidewaterarts.com](mailto:marycole@tidewaterarts.com) / 757.675.5777

**Monday, May 4, 2026 at 7:00 pm**  
**US Air Force Langley Winds**

Experience the spirit of America with the Langley Woodwind Quintet performing timeless classics and contemporary masterpieces.



**June 7, 2026 at 4:00 pm**  
**Solo Recital by Lydia Li, Piano**



**August 2, 2026 at 4:00 pm**  
**Terrific Teen Talent Recital**

Six Hampton Roads students selected by audition will present mini recitals at this concert.



## SUMMER 2026 KIDS' WORKSHOPS

OPEN TO RISING 3<sup>RD</sup>-5<sup>TH</sup> GRADERS  
MEETS FROM 10 A.M.-NOON AT THE ARTS CENTER@319,  
MAIN STREET, SMITHFIELD

FRI, JUNE 26	<b>CREATE A "LITTLE WORLD"</b> Have your child create a "Little World" in polymer clay!	
FRI JULY 10	<b>PET PORTRAIT</b> Email a picture of your favorite pet's face to <a href="mailto:sandymwaters@gmail.com">sandymwaters@gmail.com</a> Students will paint a portrait of their pet!	
FRI JULY 17	<b>WRAP BRACELET</b> Using leather and beads, students will design and create their original piece of jewelry.	
FRI JULY 24	<b>PAPER PAINTING/COLLAGE</b> Using acrylic paint, a lot of different paper, and Mod Podge, students will "paint" a beautiful bird painting.	
FRI JULY 31	<b>BALLOON SCULPTURE</b> A balloon, paper and paste turn into a fun and fanciful Hot Air Balloon hanging sculpture.	
FRI AUGUST 7	<b>ALCOHOL INK</b> Explore the beauty of Alcohol Ink on ceramic tile, learning the basics of this unique medium.	
FRI AUGUST 14	<b>WATERCOLOR</b> Learn the fine art of watercolor by painting a lovely landscape!	

\$25 each  
supplies included

Register online at [smithfieldarts.com/art-classes](http://smithfieldarts.com/art-classes) or by calling 757-357-7707

The Isle of Wight Arts League extends its gratitude for the financial support of the Arts Center @319 provided in part by these entities and community members who find the arts essential to a thriving community. Support the arts and join the league!



Hampton Roads  
Community Foundation  
Inspiring Philanthropy. Changing Lives.



# Art Classes

For more information on Art Classes call 757.357.7707

Photos (right) from the local school Art Teachers Reception held in March.

## Introduction to Oil Painting: Beginner Class

May 13 and 14, 2026, Wednesday and Thursday 1-4 pm

Instructor: Diane Greenhalgh



Unlock the vibrant world of oil painting in this beginner-friendly two-day course. Sessions will cover basic techniques, color mixing, different mediums, brushwork and more. You will learn how to handle materials safely and build a painting from the first sketch to the final highlight. Build on skills learned in each class. All supplies provided. Class Fee is \$75 for Members (\$85 for Non-members) plus a Materials fee of \$25. **Register by May 8** to reserve a seat in this class. Ages 16 and up. Call 757.357.7707 for details or to register.



The Isle of Wight Arts League held a reception recently to kick off the new fundraising campaign for the non-profit group of fine artists and musicians in the community. This year, the Arts Center @319 Main Street launched a naming convention to dedicate its 600-square-foot art gallery, artists' studios, and classroom after people, businesses, and/or organizations that make generous donations to support the group.

In addition to its April "Art for \$100" exhibit and sale of donated artwork, and the two-to-three fine artists' collaborative art pieces auctioned throughout the year, the naming of the spaces will become an annual event, with names changing each year. To begin this new venture, a generous donation was made by stained-glass Resident **Artist Heidi Wurm and her husband, Michael**. Michael's employer, **Smithfield Foods, matched the Wurms' donation through its Employee Matching Gift Program**. This initiative helps further the impact of team members' donations on the causes they are personally passionate about and is part of Smithfield Foods' commitment to support the local community.

"When we first moved here in 2019, we left behind our family, hometown, and the volunteer roles that meant so much to us," said Heidi. "The Arts Center @ 319 quickly became a place of belonging—close to our new home and work—and a creative, social outlet during a season of major change. As a resident artist, I've seen firsthand the dedication of the volunteers, artists, and community members who make this special place possible. We've met visitors from near and far who leave with a small piece of Smithfield. We're proud to support the Arts Center and grateful for the lasting connections and memories we've made here."

One of the artists' studio rooms was also named to help initiate the program. **Priscilla Guthrie**, of Franklin, is an Arts League member who regularly attends workshops and events held at the Arts Center in addition to taking private lessons with resident jeweler Diane Milner.

The Arts Center@319 still has two additional naming opportunities available for the remaining artists' studios room and the classroom; all located to the left of The Wurm Gallery. **Donors interested in these naming opportunities at the Arts Center @319** may contact the Arts Center director, Sheila Gwaltney, at 757-357-7707 or email [info@smithfieldarts.org](mailto:info@smithfieldarts.org).

The Isle of Wight Arts League is a non-profit organization that, in addition to housing fine artists, exhibits, and offering art classes at its 319 Main Street location, includes musical entertainment through Smithfield Music, Sundays at Four, and the Summer Concert Series.

The Arts Center@319 is housed in the same building as Smithfield & IOW Tourism, which annually welcomes approximately 11,500 visitors from around the world. Visitors are encouraged to talk with artists while they work in their studios, painting, working in stained glass, or making unique jewelry. Isle of Wight Arts League members display their creations in the Arts Center's gift shop, which can include photography, sculpture, a variety of jewelry, stained glass, pottery, and more. Members teach a variety of art classes that are open to the public.

# Summer Concert Lineup 2026

## FORTY (40) YEAR CELEBRATION!



It has been a fantastic forty (40) years of the Summer Concert Series!

Thank you John and Anne Edwards (pictured left) for your brilliant idea in 1987. Enjoy your retirement! As we continue to bring great music to the Main Street Stage, we would like to say thank you to the community for continuing to attend the free concerts for forty (40) years. It wouldn't be an iconic seasonal event without your patronage.

Some of you have attended rain, shine, heat and covid. This year will be as grand as ever. The line up has some of the best talent in and around the Smithfield area.

The celebration of forty (40) years of Summer Concert Series can't be mentioned without acknowledging some of our many continued and current supporters (as of April 2026), be it by donating their time or finances: Isle of Wight Arts League; Smithfield Times; Town of Smithfield; Smithfield & Isle of Wight Convention & Visitors Bureau (CVB-especially Judy Winslow and Connie Chapman); Smithfield Little Theatre (donation of their building and performances); The Edwards Foundation; The Gwaltney Foundation; Sam White & David Green; Jim Abicht; Mark Hall; Stephanie Faleski; Valerie Johnson; Bob & Kathy Strozak; Vero Tucker; Brenda Saunders; Dawna Thompson; Sonia Bailey; Karl & Chenita Gillis and Towne Bank.

As we continue to bring great music and a myriad of genres, we need to generate funds to continue this great legacy.

We will be having a **FORTY YEAR FUNdraiser** at the **Smithfield Center** on **September 4<sup>th</sup>**, at **7:30 pm** and hope to see you there. The Griffin Lane Band featuring Clay and Nancy Griffin will be donating their time and talent and sharing great sounds of Soul, Country and Rock 'n' Roll.

There will be a live auction of some fine musical items such as (2) Guitars, (1) Bass Guitar, Drumsticks, Saxophone, photos and a few other surprises. We hope you will come out and support. There is a suggested minimum donation of five dollars (\$5.00-exact change please). Checks should be made payable to: Summer Concert Series – IWAL. Donations will be collected at the door.

For crowd control limited tickets will be available at The Art Center @ 319 Main Street. Please do not take more tickets than you can absolutely use, it prevents others from attending. Keep on the lookout for updates and details at [SmithfieldArts.org](http://SmithfieldArts.org) or [SmithfieldTimes.com](http://SmithfieldTimes.com). We are looking forward to sharing another decade of fine entertainment.

Gratefully submitted by:

Elaine Dairo, Director, Summer Concert Series

Isle of Wight Arts League

## 2026 SUMMER CONCERT SERIES

Concerts held on Fridays at 7:30 pm  
Main Street Square, 228 Main Street, Smithfield

May 22	J & J Duo	Smooth Jazz
May 29	Bobby Blackhat	Blues
June 5	K-Soul	Motown
June 12	Bob Zentz & Friends	Sea Shanties/Kids Show
June 19	K-Soul	Gospel
June 26	York River Band	60's Rock/Pop
July 3	Tidewater Concert Band	Patriotic
July 10	Double Treble	R&B/Jazz/Soul
July 17	Angela Easterling	Upbeat Americana
July 24	Higher Ground	Big Band Jazz
July 31	Corey Pavlosky Band	Pop
Aug 7	Navy Fleet Forces	Military Combo
Aug 14	2 <sup>nd</sup> Ending Brass Quintet	Patriotic/Americana
Aug 21	Stan's Big Band	Modern Big Band
Aug 28	Forte	Jazz

### Sept 4 BONUS FUNDRAISER CONCERT

@ Smithfield Center, 220 N Church St. PAY @ DOOR.  
Minimum \$5 donation. SEE BACK for Details!

During inclement weather, check for possible cancellation at:  
Facebook: [Isle of Wight Arts League/Visit Smithfield VA/Town of Smithfield](https://www.facebook.com/IsleofWightArtsLeague/)  
Website: [SmithfieldArts.org](http://SmithfieldArts.org) or [SmithfieldTimes.com](http://SmithfieldTimes.com)

The Isle of Wight Arts League presents

# GRIFFIN LANE BAND

SOUL, COUNTRY, ROCK 'N' ROLL  
FEATURING CLAY & NANCY GRIFFIN

FRIDAY,  
SEPT. 4,  
2026

DOORS OPEN 6 PM  
SHOW 7:30 PM

FUNDRAISER  
CONCERT

PAY @ DOOR.  
1st come, 1st served.

**\$5 MINIMUM SUGGESTED DONATION**

Bring exact change. Checks payable to:  
Summer Concert Series - IWAL.  
Bring your checkbook for Auction: Guitars, Sax, & more!

**SMITHFIELD CENTER - 220 N CHURCH ST., SMITHFIELD**



BOOTS ON THE GROUND



*Creative Voice newsletters are available online at [www.smithfieldarts.org](http://www.smithfieldarts.org)*

**Support the Arts! Join the Arts League for only \$45 a year — get discounts on classes and gift shop items!**

